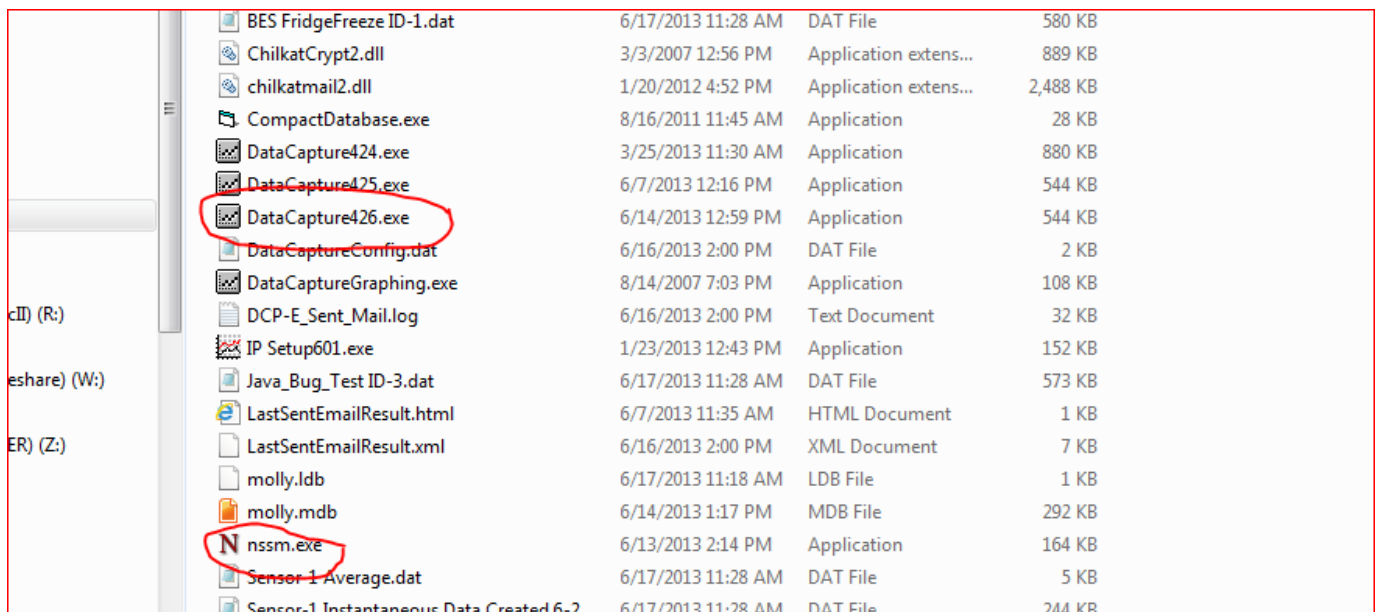


NSSM Windows 7 64 bit tutorial for Data Capture

Overview: Data Capture does not run as a Windows Service* all by itself. Why would you want to, you ask? If you log out of your computer, or Windows does an automatic update and reboots the computer, it is very likely Data Capture will no longer be running. Log files will be missed and possibly important alert email and sms messages will not be sent if a problem arises. There are other software products that will run Data Capture as a Windows Service, such as Firedaemon Pro, Always Up, and Service Shell. NSSM is free though. It does not have a graphical interface, as the other three do. Since this is free third party software, we do not offer any support for it. Temperature Guard is not affiliated with any of these vendors and makes no claims or warranties regarding their products. Refer all support questions to the software vendor.

- 1 Download nssm from <http://nssm.cc/>
- 2 Unzip and copy the nssm.exe into the Data Capture folder. It only seems to work from the folder the service executable you want to run is in. Use the appropriate 32 or 64 bit version for your operating system. You should only have one datacapture.exe file in your folder. I have several for testing purposes.

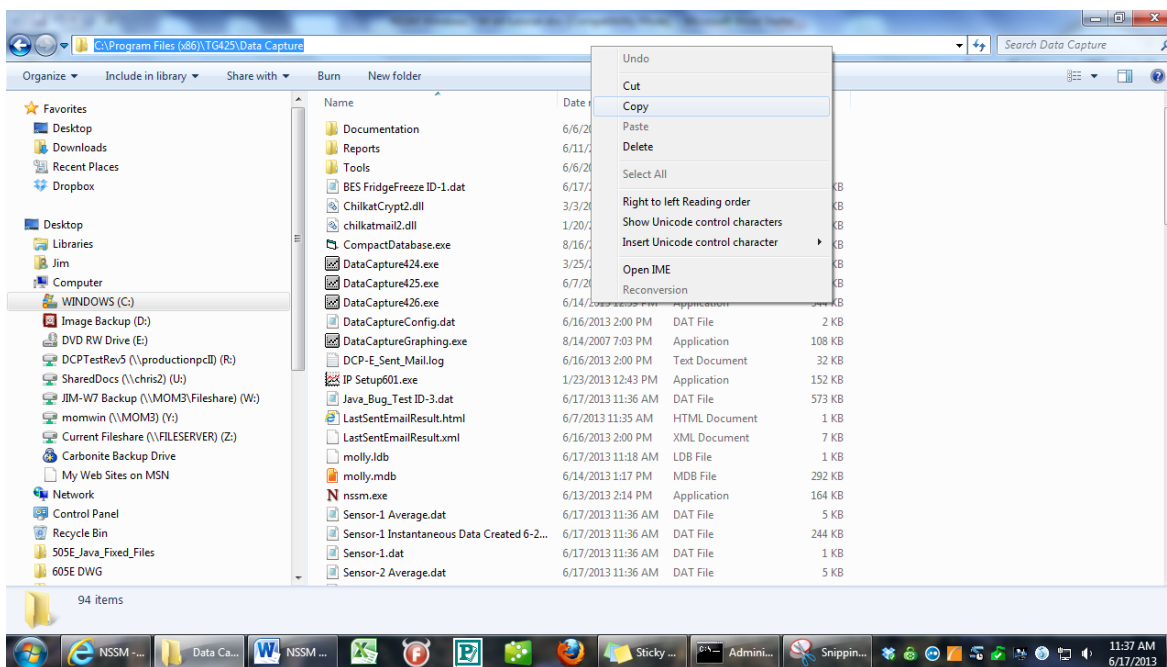


- 3 In this case it is in C:\Program Files (x86)\TG425\Data Capture, but yours may be different.
- 4 Once copied to the Data Capture folder, open a cmd prompt and navigate to the Data Capture folder. Use copy and paste from Windows Explorer to make it easier.

```
Administrator: C:\Windows\system32\cmd.exe
Microsoft Windows [Version 6.1.7601]
Copyright (c) 2009 Microsoft Corporation. All rights reserved.

C:\Users\Jim>cd\
C:\>cd C:\Program Files (x86)\TG425\Data Capture
C:\Program Files (x86)\TG425\Data Capture>
```

5 At the initial prompt type "cd\" (without the quotes) and press enter. Then "cd[space]" (again without the quotes) followed by the entire copied path containing the nssm.exe and Data Capture exe files. Paste it right after cd [space] in the cmd window.



7 Typing nssm at the prompt gets you the menu options for nssm.

```
Administrator: C:\Windows\system32\cmd.exe
Microsoft Windows [Version 6.1.7601]
Copyright (c) 2009 Microsoft Corporation. All rights reserved.

C:\Users\Jim>cd\

C:\>cd C:\Program Files (x86)\TG425\Data Capture

C:\Program Files (x86)\TG425\Data Capture>nssm
NSSM: The non-sucking service manager
Version 2.16, 2012-12-01
Usage: nssm <option> [args]

To show service installation GUI:
    nssm install [<servicename>]

To install a service without confirmation:
    nssm install <servicename> <app> [<args>]

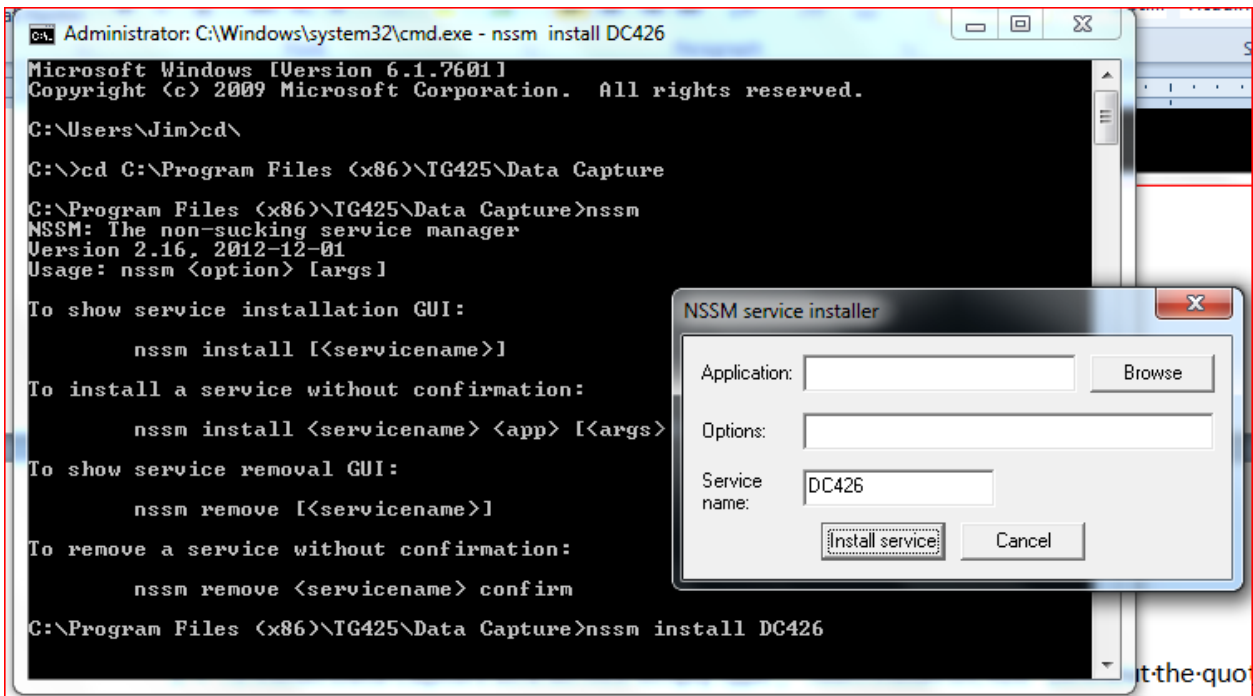
To show service removal GUI:
    nssm remove [<servicename>]

To remove a service without confirmation:
    nssm remove <servicename> confirm

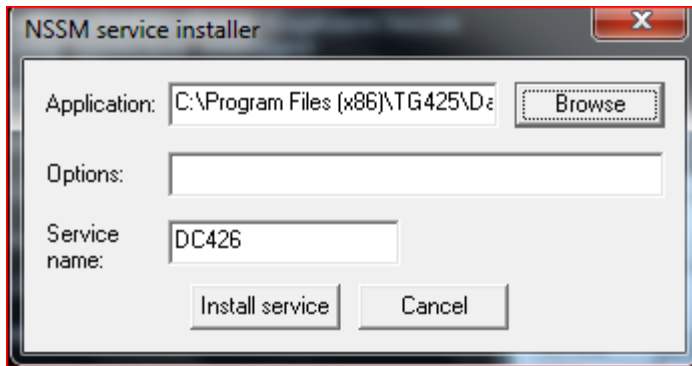
C:\Program Files (x86)\TG425\Data Capture>
```

8

- 9 To install Data Capture as a service simply type , “nssm install DC426” (without the quotes). I named mine DC426, but you can name it whatever you like, just remember what it is.



Installer window should pop up. Now browse to datacapture426.exe and click Install Service. 426 is the revision number of Data Capture and is likely to change over time. Also my folder that is named TG425 by default is named Temperature Guard. I simply chose to make it smaller when I installed.



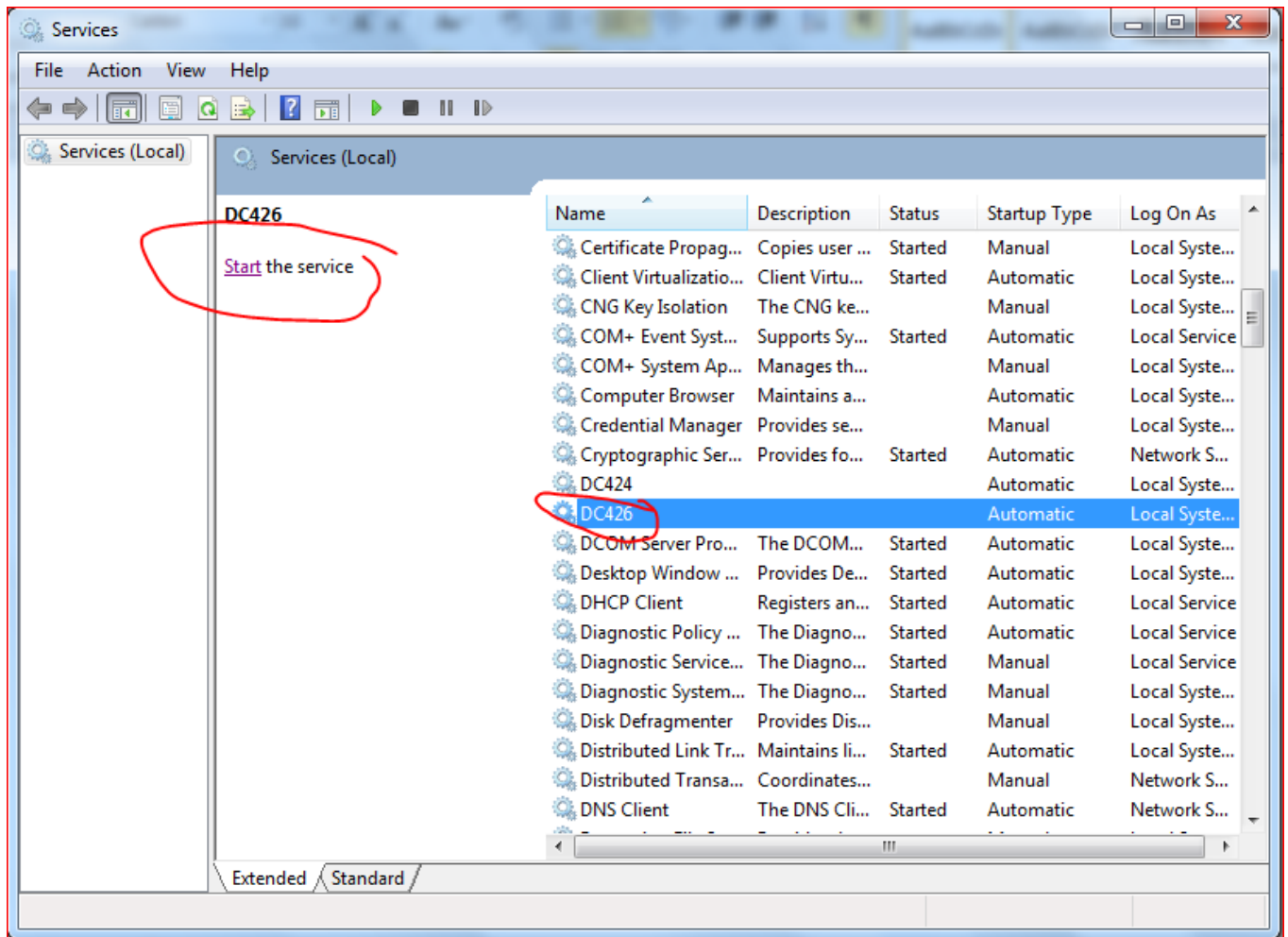
10

11 You should get a window saying successfully installed.

12 Once you do you need to open up Services and start it. Type services in the search box.



13



14

Highlight the service you created and click Start the service.

- 15 Now test it. Log out of the computer and see if it will send an alert email, or if email isn't set up check to see if log files are collected while the computer is logged out. This may take 20-30 minutes. Use Data Capture Graphing to check for log files.
- 16 Some things to note. If using nssm or any software to run Data Capture as a service, try to have the email working, and send a daily email to the Administrator every day at a time when the computer is likely to be logged out. Also the Data Capture icon will not show in the system tray when it is running as a service. If you need to make changes, you will need to open a second copy manually. Close it when you are done, or you may get a double set of logs.

*http://en.wikipedia.org/wiki/Windows_service