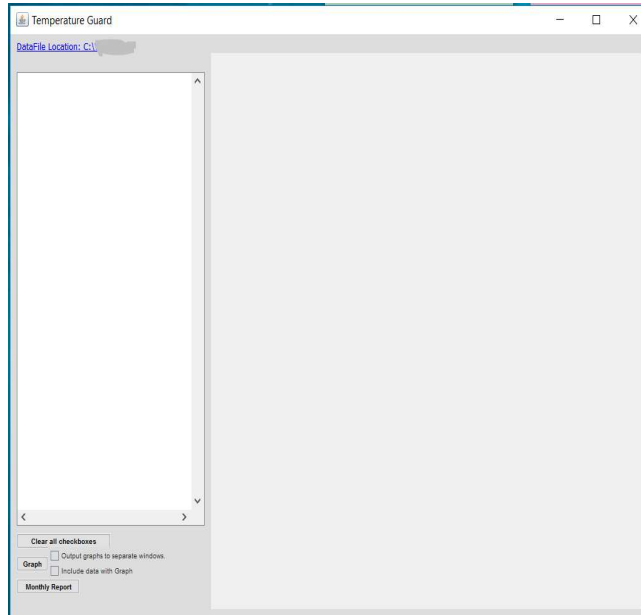
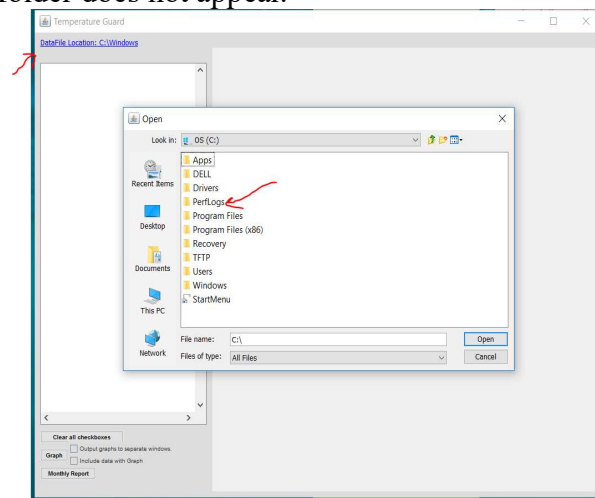


TG Graph Manual

To use the TG Graph program, you need to be able to browse to the folder containing the data.



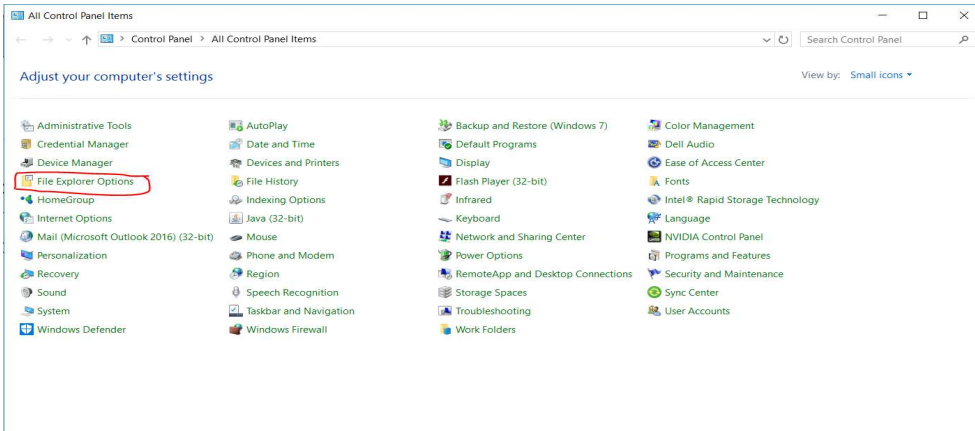
Click on the Data File location link. An open box will appear for you to browse to the correct location. As you can see the Program Data folder does not appear.



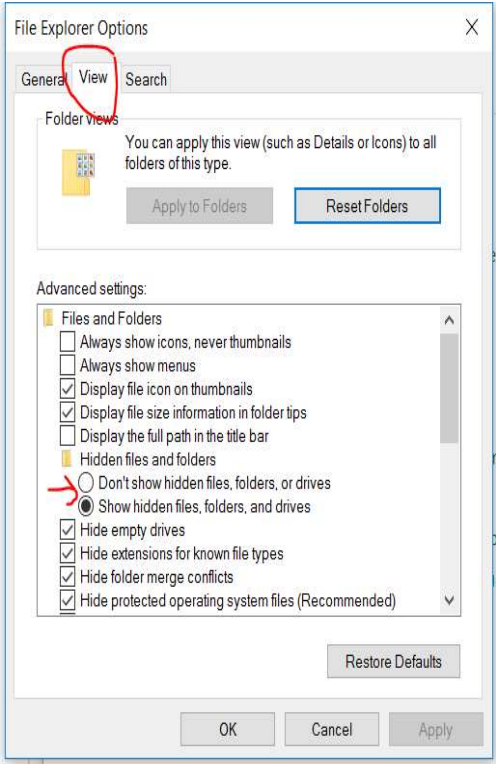
Data Capture 2016 and later versions store the databases and data in a folder (C:\ProgramData\Temperature Guard\Data Capture 2016) that is hidden by default by Microsoft. Here is how to un-hide it.

Un-hiding the Program Data Folder

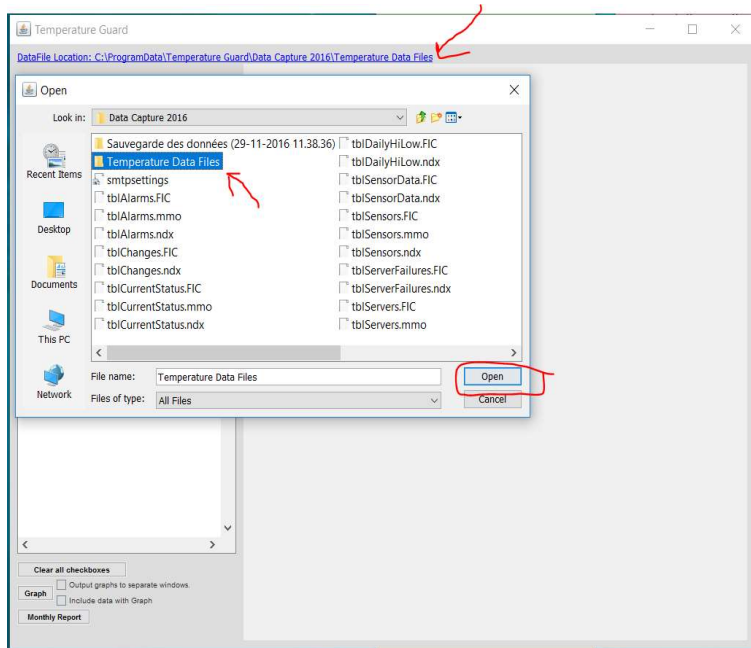
Open Control Panel
Choose File Explorer Options (It may be labeled Folder Options in some older operating systems.)



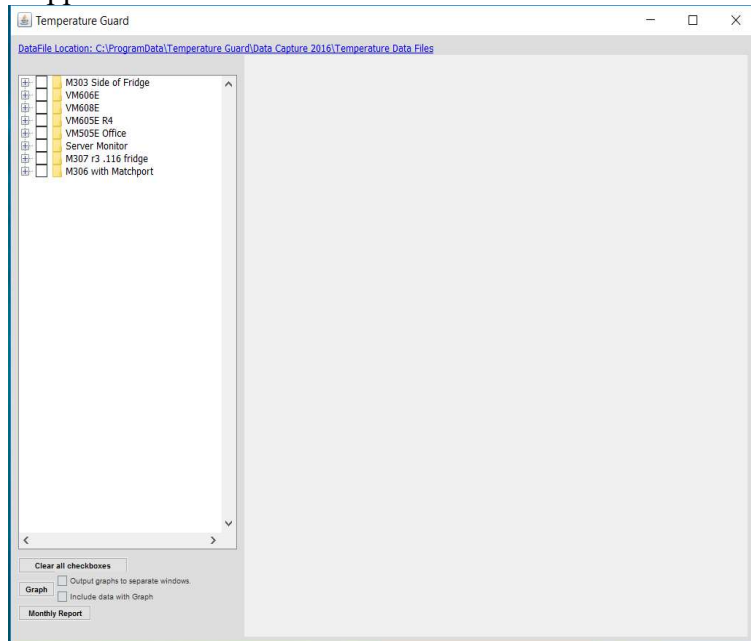
Select the view tab, and select the radio button for Show hidden files, folders, and drives.
Click Apply and OK.



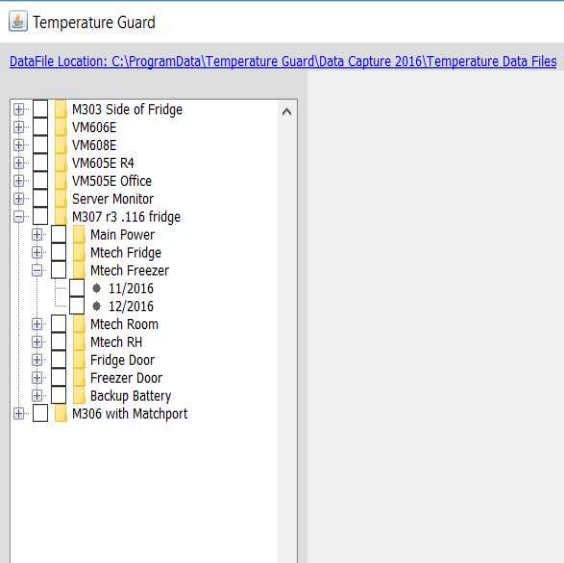
You should now be able to browse to the correct directory. Just select Temperature Data Files and click Open.



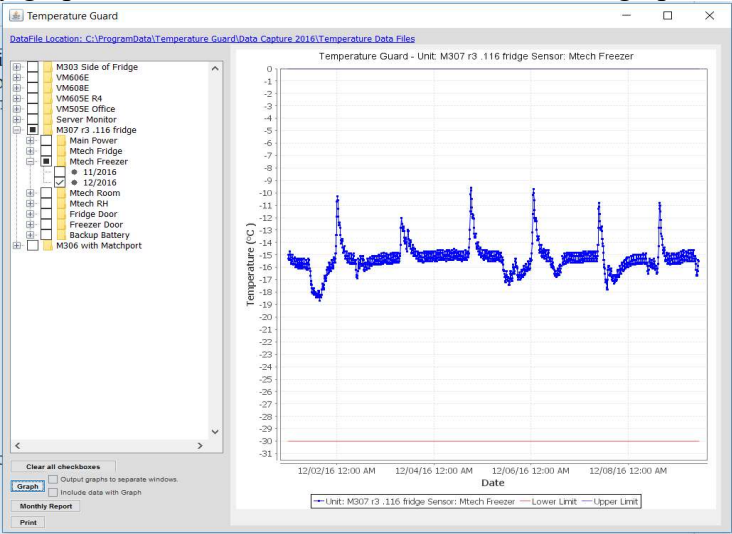
The list of unit(s) will then appear.



Clicking the plus sign next to the unit name will show all the sensors for that unit. Clicking the plus sign next to a sensor name will show all the months data is available. A new data file is available for each sensor every month.



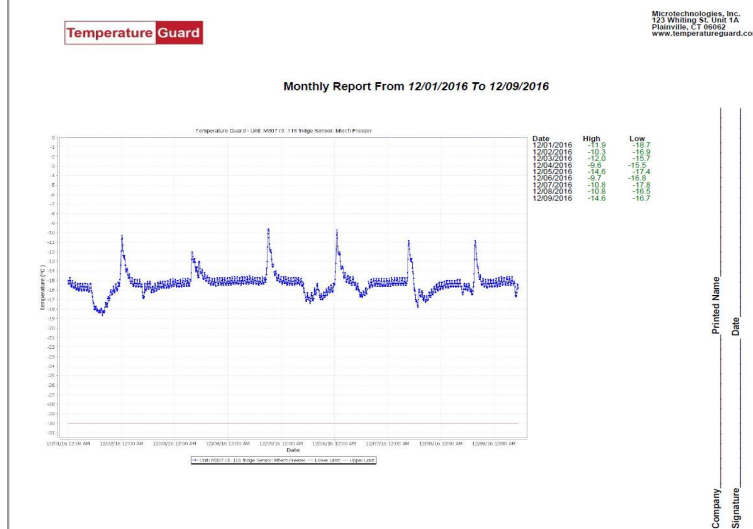
If you would like to simply graph the data, select the check box, and click graph.



You may print the graph as well simply by clicking the Print button.

Monthly Report

The monthly report will put on one page .pdf a graph and the highs and lows for the entire month.



If the pdf will not generate, follow the instructions below.

Close the program.

Right click on the icon on the desktop and choose properties.

Select the Compatibility tab and click the Change setting for all users button.

Check the box, Run as Administrator, click the Apply and OK buttons.

Click OK again on previous screen.

Open

- Open file location
- Run as administrator
- Troubleshoot compatibility
- Pin to Start
- Scan with Windows Defender...
- Pin to taskbar
- Restore previous versions
- Send to >
- Cut
- Copy
- Create shortcut
- Delete
- Rename
- Properties

TGGraph Properties

General Shortcut Compatibility Security Details Previous Versions

If this program isn't working correctly on this version of Windows, try running the compatibility troubleshooter.

Run compatibility troubleshooter

[How do I choose compatibility settings manually?](#)

Compatibility mode

Run this program in compatibility mode for:

Windows 8

Settings

Reduced color mode

8-bit (256) color

Run in 640 x 480 screen resolution

Disable display scaling on high DPI settings

Run this program as an administrator

Change settings for all users

OK Cancel Apply

TGGraph Properties

Compatibility for all users

If you have problems with this program and it worked correctly on an earlier version of Windows, select the compatibility mode that matches that earlier version.

Compatibility mode

Run this program in compatibility mode for:

Windows 8

Settings

Reduced color mode

8-bit (256) color

Run in 640 x 480 screen resolution

Disable display scaling on high DPI settings

Run this program as an administrator

OK Cancel Apply